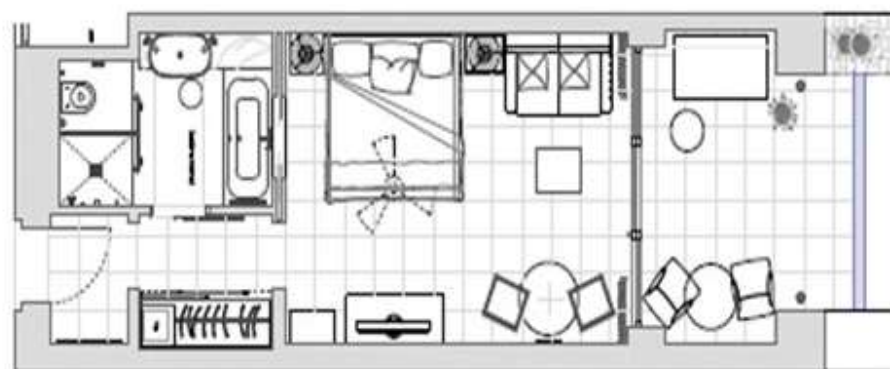




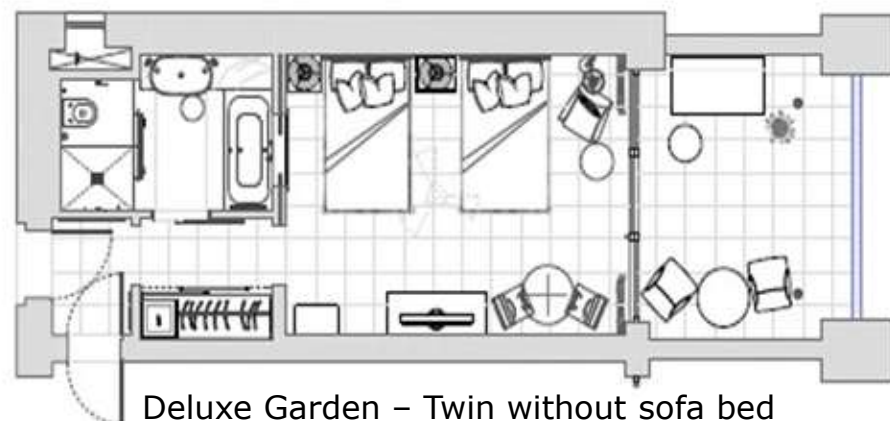
## Deluxe Garden View Room (39m<sup>2</sup>)

- Garden/resort view
- Balcony or terrace
- King-size room sleeps 3 adults, or 2 adults and 1 child (3<sup>rd</sup> person in sofa bed 1.05x1.95m) and 1 baby cot
- Twin-bed room sleeps 2 adults and 1 baby cot.
- Twin-bed room connects to Family Suite.

Crystal clear seaside elegance meets optimum comfort in The Westin Resort Costa Navarino Deluxe Rooms (39m<sup>2</sup>), with their contemporary furniture lines, light wood, and the muted tones of sea and sand. Breathe in the fresh coastal air from your private terrace or patio overlooking the resorts' olive trees, landscaped gardens or swimming pools.



Deluxe Garden – King with sofa bed



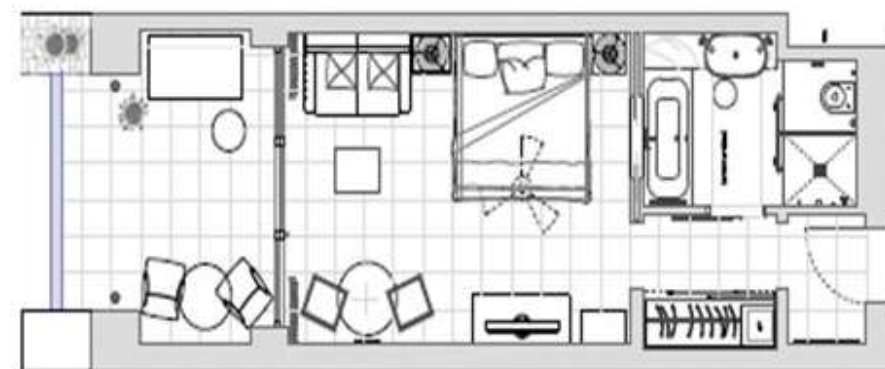
Deluxe Garden – Twin without sofa bed

## Deluxe Sea View Room (39m<sup>2</sup>)

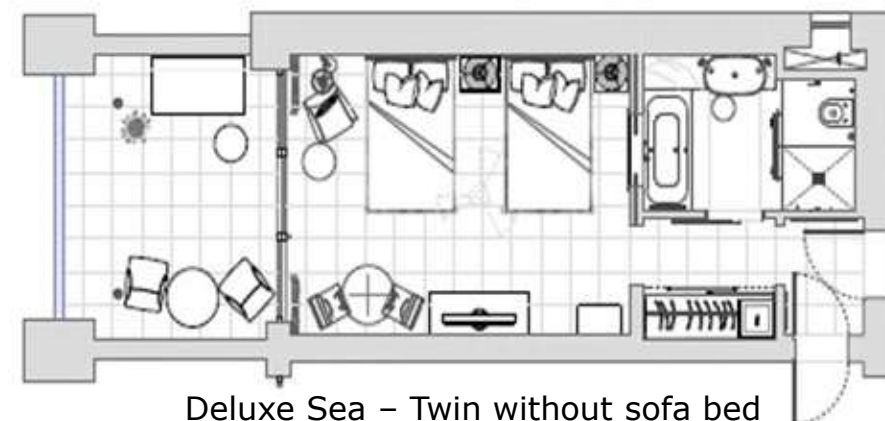
- Garden/resort and sea-view
- Balcony or terrace
- King-size room sleeps 3 adults, or 2 adults and 1 child (3<sup>rd</sup> person in sofa bed 1.05x1.95m) and 1 baby cot
- Twin-bed room sleeps 2 adults and 1 baby cot
- Twin-bed room connects to Family Suite.



Refreshing views of The Ionian Sea over the resort's landscaped gardens and pools will greet you each morning from our Deluxe Sea rooms. Contemporary décor in pleasant seascape tones, floor-to-ceiling glass doors and private open-air balcony, contribute to a relaxed ambiance.



Deluxe Sea – King with sofa bed



Deluxe Sea – Twin without sofa bed

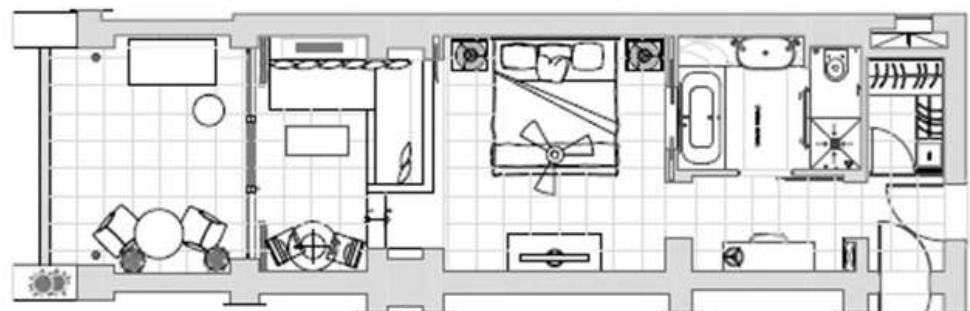
NOTE: Floor plan and image are indicative, actual layout or view may be different.



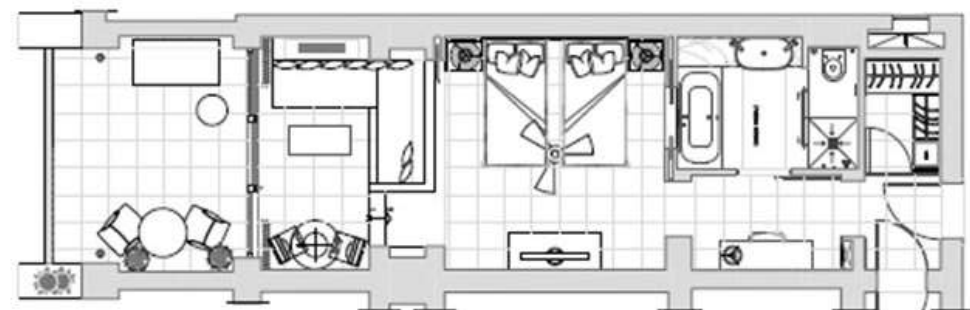
**Superior Garden View Room (49m<sup>2</sup>)**

- Garden/resort view
- King-size bed or twin beds
- Sleeps 2 adults and 1 child (up to 12 years old) in corner sofa bed and 1 baby cot.

Need a little extra room to stretch out? Save that Heavenly Bed® for bedtime. With one of our Superior rooms (49m<sup>2</sup>), you'll enjoy a separate lounge area to put your feet up and unwind at any time of the day. Our Superior rooms also feature private terraces and patios with a variety of views overlooking our gardens, pools and olive trees – the idyllic setting for you to recharge. Families travelling with children can also take advantage of the built-in divan bed to keep our littlest guests close.



Superior Room – King with corner sofa bed



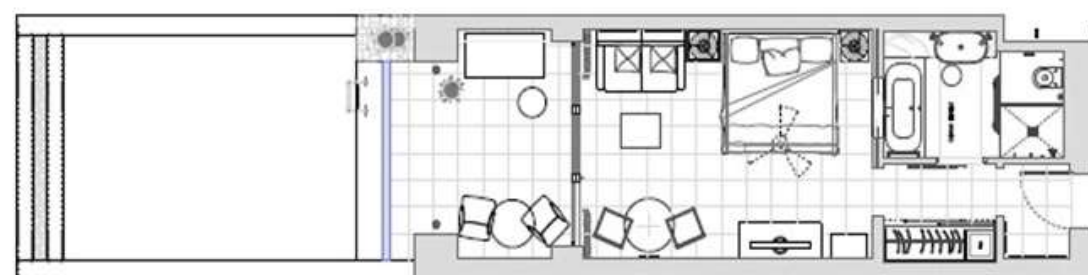
Superior Room – Twin with corner sofa bed

**Infinity Room Garden View (39m<sup>2</sup>)**

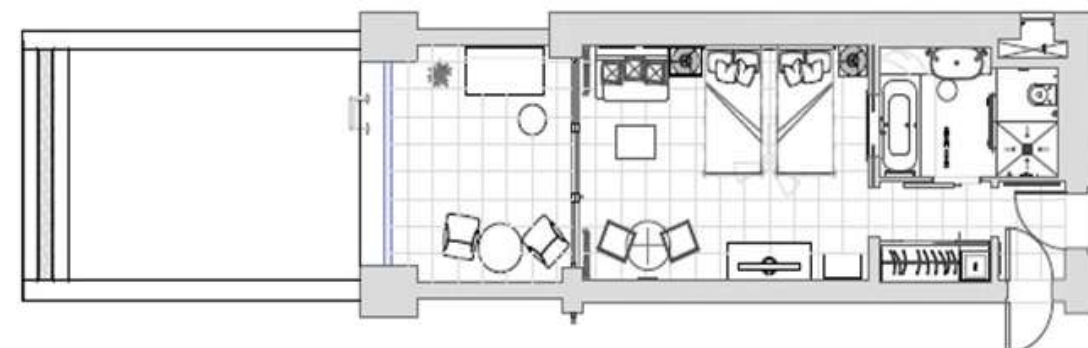
- Garden/resort view
- Terrace with private pool
- King-size room sleeps 3 adults, or 2 adults and 1 child in sofa bed (1.05x1.95m) and 1 baby cot
- Twin-bed room sleeps 2 adults and 1 child in sofa bed (0.78X1.95m) and 1 baby cot
- Twin-bed room connects to Infinity Suite



Find total serenity in our Infinity Rooms (39m<sup>2</sup>), recharge your senses and refresh your spirit while napping, or enjoying an alfresco drink by your individual infinity pool (23m<sup>2</sup>), just steps from your Westin Heavenly® Bed. Luxuriate in the sleek and elegant design of your room decorated in a pleasing palette of refined taupe and sand with views over the resort's olive trees, landscaped gardens and pools.



Infinity Room – King with sofa bed, private pool



Infinity Room – Twin with sofa bed, private pool

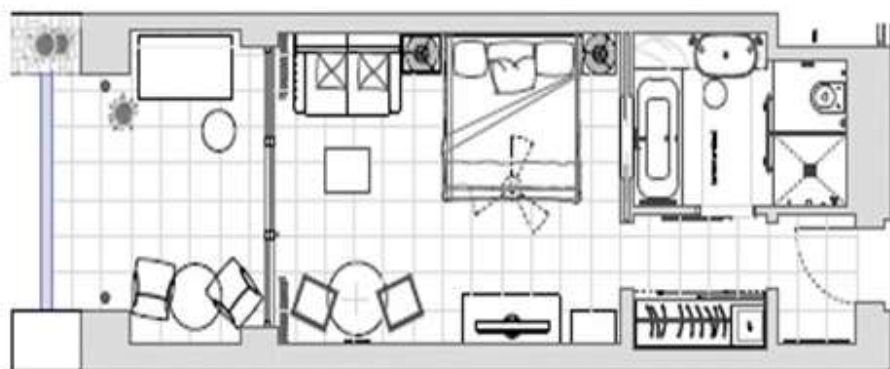
**POOL IS HEATED: March to May & October**



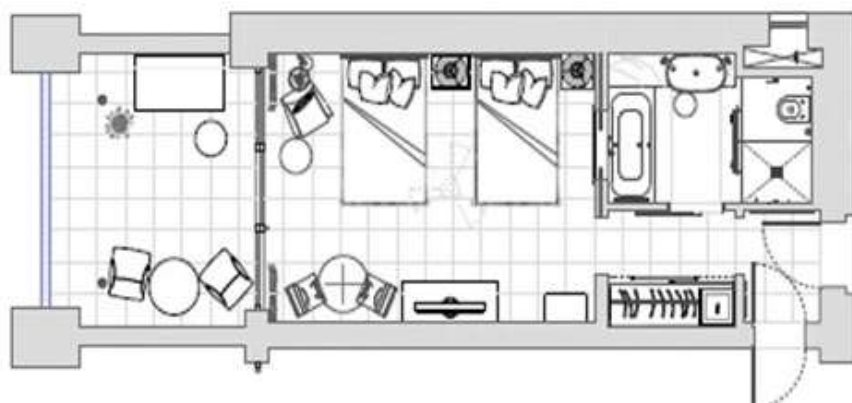
**Premium Deluxe Sea View Room (39m<sup>2</sup>)**

- Direct seafront view
- King-size room sleeps 3 adults, or 2 adults and 1 child (3<sup>rd</sup> person in sofa bed 1.05x1.95m) and 1 baby cot
- Twin-bed room sleeps 2 adults and 1 child in sofa bed (0.78X1.95m) and 1 baby cot
- Twin-bed room connects to Premium Suite

You'll have every chance to ocean-gaze in The Westin Resort Costa Navarino Premium Deluxe Sea Rooms (39m<sup>2</sup>), with their floor-to-ceiling glass doors, and private open-air terrace, all with an unobstructed view of the majestic Ionian Sea. A truly refreshing atmosphere awaits you with contemporary interiors in pleasant seascape tones and beautiful light wood furnishings.



Premium Deluxe Sea – King with sofa bed



Premium Deluxe Sea – Twin without sofa bed

NOTE: Floor plan and image are indicative, actual layout or view may be different.

**Superior Infinity Garden View Room (49m<sup>2</sup>)**

- Garden/resort view
- Terrace with private pool
- King-size bed or twin beds
- Sleeps 2 adults and 1 child (up to 12 years old) in corner sofa bed and 1 baby cot.



Allow your senses to expand in the extra space afforded by our Superior Infinity rooms (49m<sup>2</sup>), complete with an individual infinity pool (23m<sup>2</sup>) - just for you and yours. Our Superior Infinity rooms are perfect for indoor and outdoor relaxation with a separate lounge area overlooking the resorts landscaped gardens, pools and olive trees to enjoy the atmosphere of the resort. Families travelling with children can also take advantage of the built-in divan bed to keep our littlest guests close



Superior Infinity Room – King with corner sofa bed, private pool



Superior Infinity Room – Twin with corner sofa bed, private pool

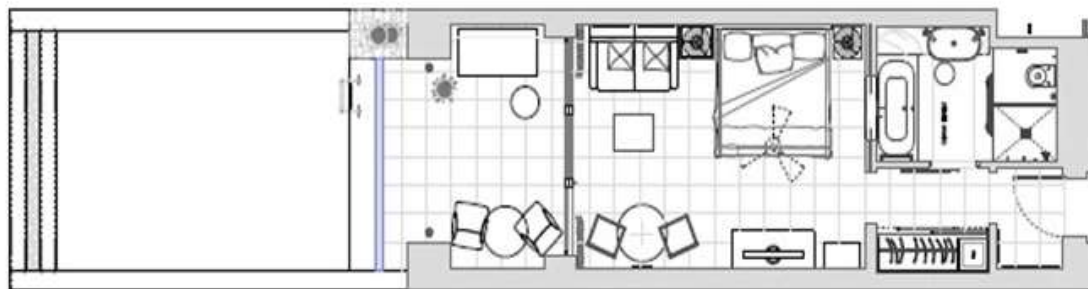
**POOL IS HEATED: March to May & October**



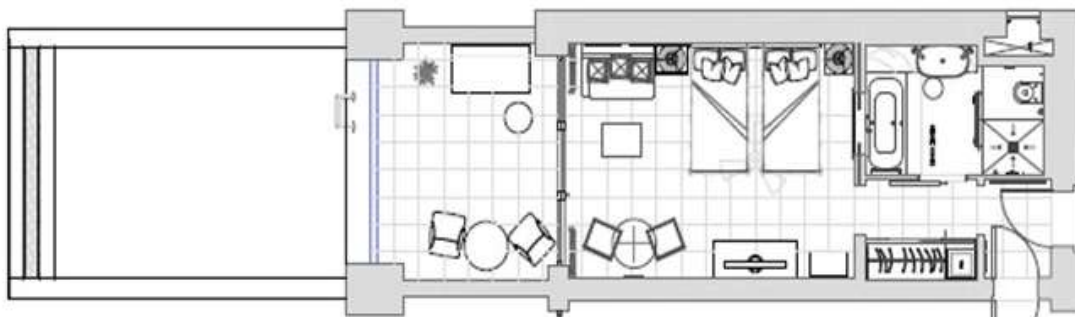
**Premium Infinity Sea View Room (39m<sup>2</sup>)**

- Direct seafront view
- Terrace with private pool
- King-size room sleeps 3 adults, or 2 adults and 1 child (3<sup>rd</sup> person in sofa bed 1.05x1.95m) and 1 baby cot
- Twin-bed room sleeps 2 adults and 1 child in sofa bed (0.78X1.95m) and 1 baby cot
- Twin-bed room connects to Premium Infinity Suite

Let yourself be transfixed by the sweeping views of the Ionian Sea from the beachfront location of our Premium Infinity Rooms (39m<sup>2</sup>), each with its own private infinity pool (23m<sup>2</sup>). Escape from daily stress and relax to the natural rhythm of Costa Navarino, enjoy a cocktail before dinner by the pool as day tapers into night.



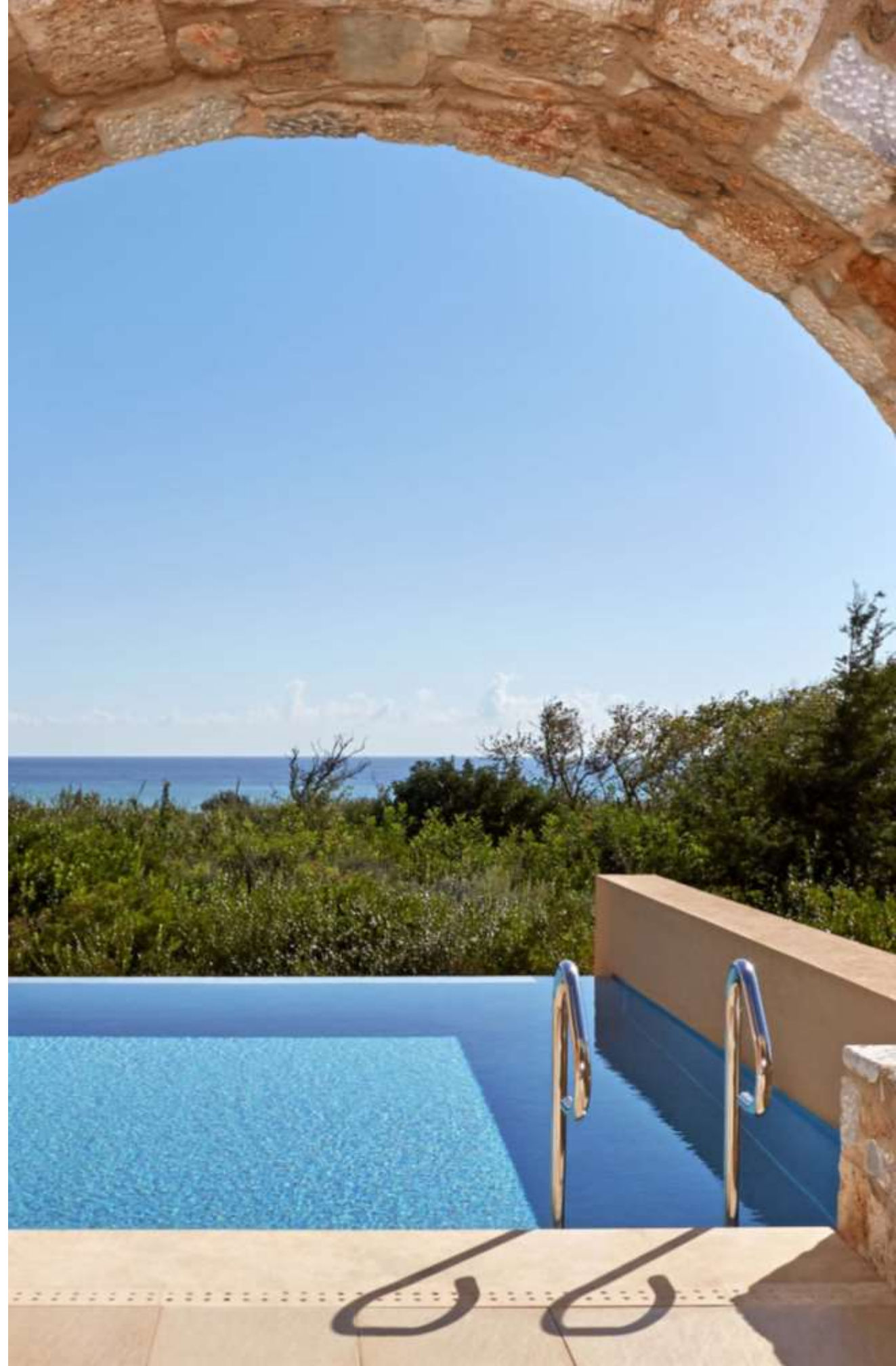
Premium Infinity Room – King with sofa bed, private pool



Premium Infinity Room – Twin without sofa bed, private pool

**POOL IS HEATED: March to May & October**

NOTE: Floor plan and image are indicative, actual layout or view may be different.





**Family Suite (70-80m<sup>2</sup>)**

- Garden/resort view
- Terrace or balcony
- Separate bedroom with king bed and living room with double sofa bed
- 2 bathrooms
- Sleeps max 3 adults & up to 2 children (1 adult in rollaway bed and 2 children sharing sofa bed), or 2 adults and 3 children (2 children sharing sofa bed & 1 in rollaway bed), and 1 baby cot
- Connects to Deluxe Garden twin Room and/or Deluxe Sea twin Room

Spread out in our one-bedroom family Suite (70-80m<sup>2</sup>), whilst the spacious lounge area offers a delightful space for relaxing and socializing, the separate bedroom promises uninterrupted tranquility. Your private terrace offers mixed views over the resort's pools, olive groves and landscaped gardens, the setting is just right to escape from the pace of daily life and soak up the atmosphere of the Navarino Dunes.



Family Suite – King with double sofa bed  
Separate bedroom and living room, 2 bathrooms

**Premium Suite (70-80m<sup>2</sup>)**

- Seafront view
- Terrace or balcony
- Separate bedroom with king bed and living room with double sofa bed
- 2 bathrooms
- Sleeps max 3 adults & up to 2 children (1 adult in rollaway bed and 2 children sharing sofa bed), or 2 adults and 3 children (2 children sharing sofa bed & 1 in rollaway bed), and 1 baby cot
- Connects to Premium Deluxe Sea Room

For the ultimate in luxury right on the Mediterranean's shore, indulge yourself in one of our one-bedroom premium suites (70-80m<sup>2</sup>). Designed as the ultimate retreat, our premium suites capture a glorious Ionian Sea view and offer a new dimension in graceful comfort, with its separate bedroom and lounge, including a dining space and expansive terrace.



Premium Suite – King with double sofa bed  
Separate bedroom and living room, 2 bathrooms

NOTE: Floor plan and image are indicative, actual layout or view may be different.



**Infinity Suite (70-80m<sup>2</sup>)**

- Garden/resort view
- Terrace with private pool
- Separate bedroom with king bed and living room with double sofa bed
- 2 bathrooms
- Sleeps max 3 adults & up to 2 children (1 adult in rollaway bed and 2 children sharing sofa bed), or 2 adults and 3 children (2 children sharing sofa bed & 1 in rollaway bed), and 1 baby cot
- Connects to Infinity twin Room

Unpack your senses and transform your holiday into a renewing experience in one of our one-bedroom Infinity Suites (70-80m<sup>2</sup>). Gather at your very own private infinity pool for a refreshing dip while basking in the glow of our legendary sunsets or take advantage of the separate lounge and dining area to put your feet up and unwind at any time of the day. Infinity Suites enjoy views over the resorts pools, landscaped gardens & olive trees.



Infinity Suite – King with double sofa bed  
Separate bedroom and living room, 2 bathrooms, private pool

**POOL IS HEATED: March to May & October**

NOTE: Floor plan and image are indicative, actual layout or view may be different.

**Premium Infinity Suite (70-80m<sup>2</sup>)**

- Direct seafront view
- Terrace with private pool
- Separate bedroom with king bed and living room with double sofa bed
- 2 bathrooms
- Sleeps max 3 adults & up to 2 children (1 adult in rollaway bed and 2 children sharing sofa bed), or 2 adults and 3 children (2 children sharing sofa bed & 1 in rollaway bed), and 1 baby cot
- Connects to Premium Deluxe Sea Room



Experience the relaxing effects of the ocean and the renewing appointments of our Premium Infinity Suites all at once. Featuring individual infinity pools, enlarged terraces and astounding views of the Ionian Sea, these suites with their fresh, beach-inspired palette and contemporary décor, feature a comfortable conversation area and a pull-out sofa for children or friends - perfect for couples on a romantic getaway or for a family of true beach-lovers.



Premium Infinity Suite – King with double sofa bed  
Separate bedroom and living room, 2 bathrooms, private pool

**POOL IS HEATED: March to May & October**